
Futronic Technology Company Ltd.

**FinLogon
Add-On Pack**

User's Guide

Version 6.0

Copyright c 2003-2015 Futronic Technology Company Ltd.
All rights reserved

The software contains proprietary information of Futronic Technology Company Ltd.; it is provided under a license agreement containing restrictions on use and disclosure and is also protected by copyright law. Reverse engineering of the software is prohibited.

Due to continued product development this information is subject to change without notice. The information and intellectual property contained herein is confidential between Futronic Technology Company Ltd. and the client and remains the exclusive property of Futronic Technology Company Ltd. If you find any problems in the documentation, please report them to us in writing. Futronic Technology Company Ltd. does not warrant that this document is error-free.

No part of this publication may be reproduced, stored in a retrieval system, or transmitted in any form or by any means, electronic, mechanical, photocopying and recording or otherwise without the prior written permission of Futronic Technology Company Ltd.

All the product names mentioned in this Guide are trademarks or registered trademarks of their respective owners. Futronic Technology Company Ltd. acknowledges any and all rights of the trademarked companies.

Contents

Contents	3
Section 1. Introduction	4
Section 2. Installation	5
Section 3. Un-installation	7
Section 4. Getting Started	8
4.1 File Encryption/Decryption	8
4.2 One Touch Password Filler	10
4.2.1 New Profiles	11
4.2.2 Edit Profile	13
4.2.3 Additional Description for Same Profile	13
4.2.4 Backup Profile	14
4.2.5 Restore Profile	15
4.2.6 Start using OneTouch Password Filler	16

Section 1. Introduction

Thank you for using Futronic FinLogon Add-On Pack and fingerprint scanner.

We present you an innovative product based on biometric technology, which is developed on the basis of the latest developments and advanced technologies in the field.

The FinLogon Add-On Pack includes, 2 softwares, File Encryption and OneTouch Password Filler.

File Encryption Software enables computer users to encrypt and decrypt their files and folders by using their biometric data (fingerprints) along with the password. In case you want ensured privacy, you can set a very long password because you won't have to enter it.

OneTouch Password Filler Software enables you to get rid of all the troubles you have with password. Simply typing in the passwords once in your computer, you can recall them by a single touch of your finger when you need to enter them to login any local or Internet application. You don't need to memorize the passwords any more! Moreover, the passwords are kept in a safe place in your computer with encryption. So using One Touch Password Filler is a secure and convenient way to manage your password.

If you have any question about our product, please call 852-24087705 or email to inquiry@futronic-tech.com.

Section 2. Installation

Before installation, ensure your system meets the following requirements:

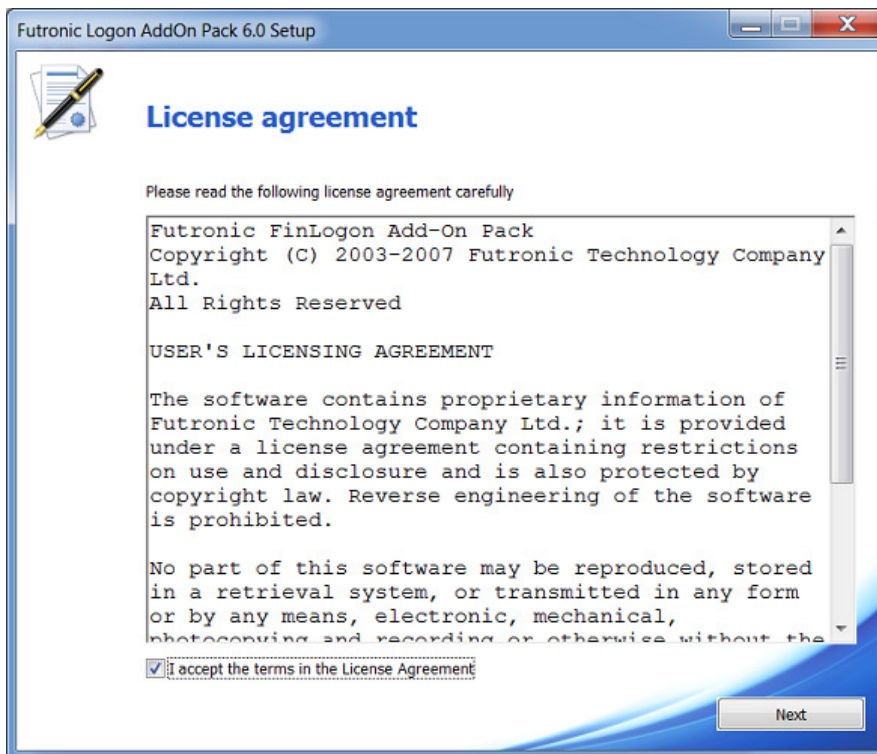
- ◆ Processor: Intel Pentium processor (or compatible) or better
- ◆ RAM: 64 MB
- ◆ Operating System: Windows XP/2003/Vista/2008/7/8/8.1/2012
- ◆ Disk Space: 100MB free
- ◆ CRROM drive
- ◆ 1 USB Port

Attention:

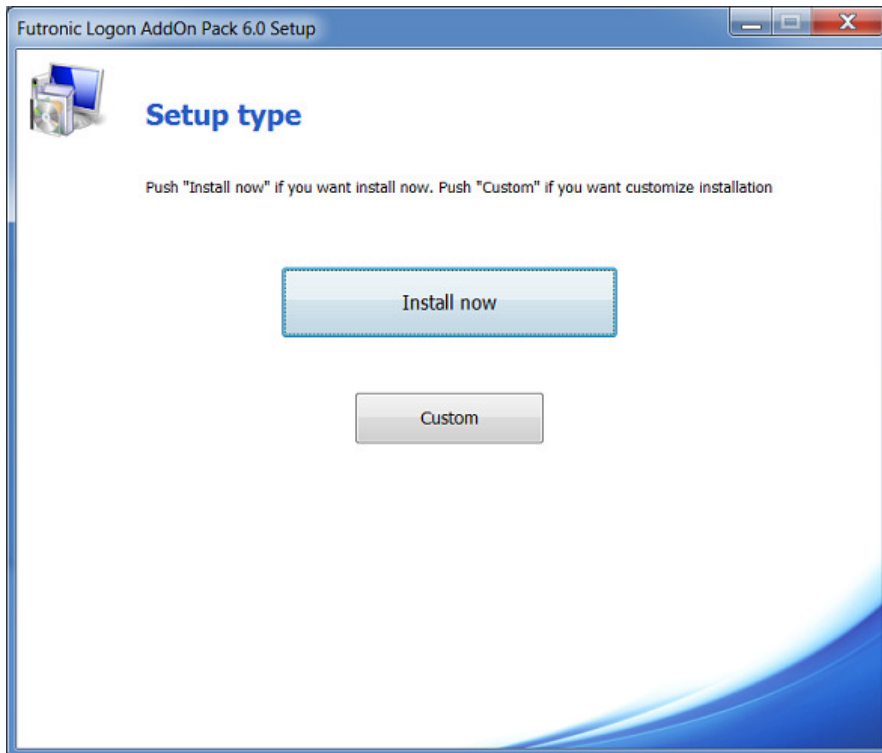
You must install FinLogon version 3.0(or higher) before you install the Finlogon Add-On Pack which needs to have the Finlogon pre-installed in the system to work.

To start installation, launch the program setup.exe from the CDROM included in the package of the product. Then follow instructions of the installation wizard.

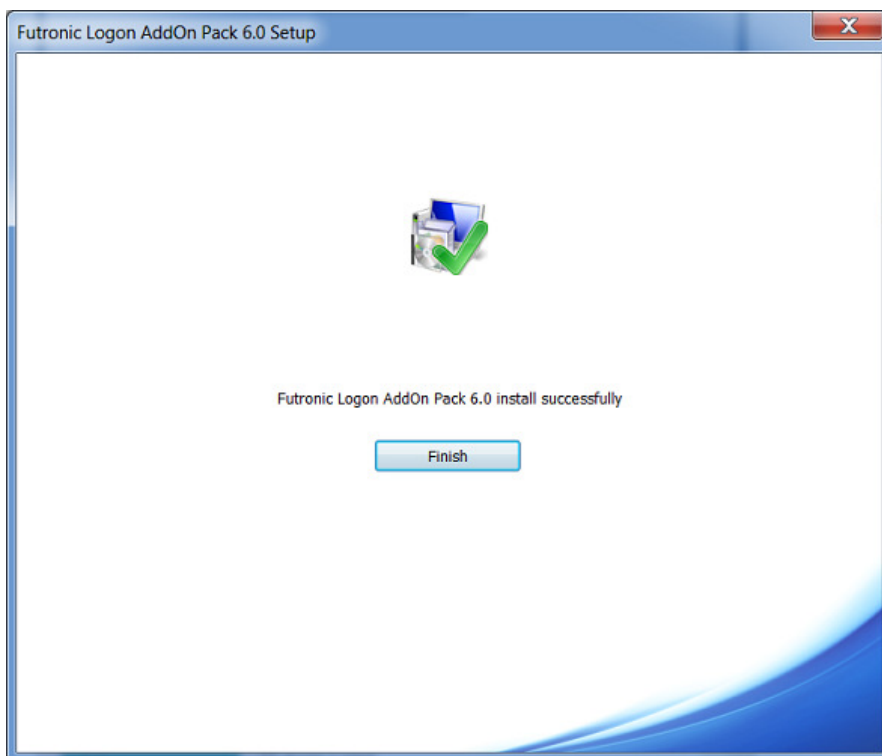
The wizard will ask you to read through the license agreement of the software.



Check "I accept ..." then press button "Next" to start.



Press “*Install Now*” and the program will be installed on your computer.



Installation completes.

Section 3. Un-installation

To remove the program, select the option Add/Remove Programs in the Windows control panel. Find **Futronic Logon AddOn Pack** and press the “*Change/Remove*” button.

After un-installation, please restart your computer.

Section 4. Getting Started

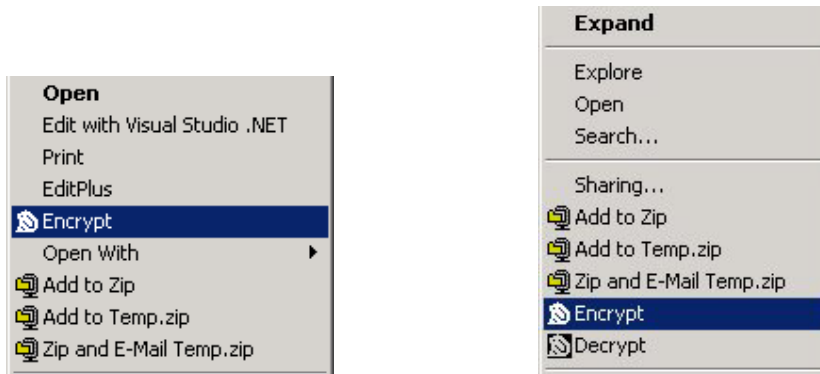
4.1 File Encryption/Decryption

Attention:

You must at least add one finger in the Finger Manager of Finlogon before you can use finger to do files/folders encryption and decryption.

The software will add the right-click Encrypt\Decrypt functionality to Windows Explorer, My Computer or any other standard file browse dialog.

In the windows explorer, right-click mouse to one file or folder that you want to encrypt, the popup menu looks like below,



After the mouse is released, the following window will appear, put your finger to do the encryption (the finger(s) you added in Finger Manager of Finlogon PE).



When your finger is identified, if it is your first time to do, a popup window will appear for you to enter the File Encryption Password.



NOTE:

Please remember this password, because it is the only chance for you to create this password, it can be used to decrypt the encrypted files/folders if you PC has any problem. The password could not be changed and recreated. So, BE CAREFUL, IT IS VERY IMPORTANT!!!

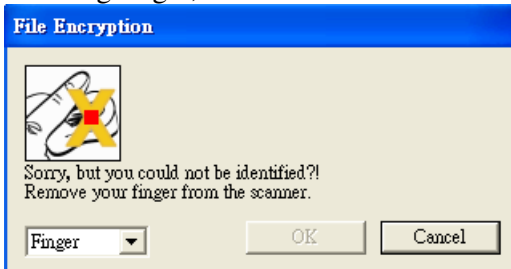
You can also use Windows logon password to encrypt/decrypt files/folders, enter the **Windows Logon Password** and click OK to do the encryption.



The File Decryption is the same as Encryption.

Detect fake finger

If this option is enable in Finger Manger and the following message is shown when scanning finger,



that means the finger put on the scanner is probably a fake finger. Or the finger does not put on the scanner properly. For the scanner to detect if a finger is “real” or “fake” properly, the finger must be put horizontally on the prism of scanner and the finger must be pressing on the scanner plastic shell right below the prism firmly.

4.2 One Touch Password Filler

Attention:

You must at least add one finger in the Finger Manager of Finlogon before using One Touch Password Filler.

After installation, the OneTouch Password Filler will auto start up when you logon to Windows. If you want to start up manually, the shortcut is located in the menu *Start->Programs->Futronic Logon->OneTouch Password Filler.*



After running, an icon will appear on the task bar, right click the program icon to open **Finger Setting Manger**(for setting your password profile). The icon shortcut is located in Right-Bottom-Corner of the task bar.



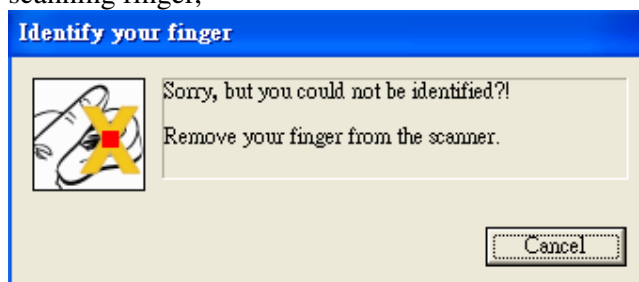
To login to the Finger Setting Manager, you should identify your finger(the finger(s) you added in Finger Manager of Finlogon PE).



The Finger Setting Manager is a tool for managing your password profiles.

Detect fake finger

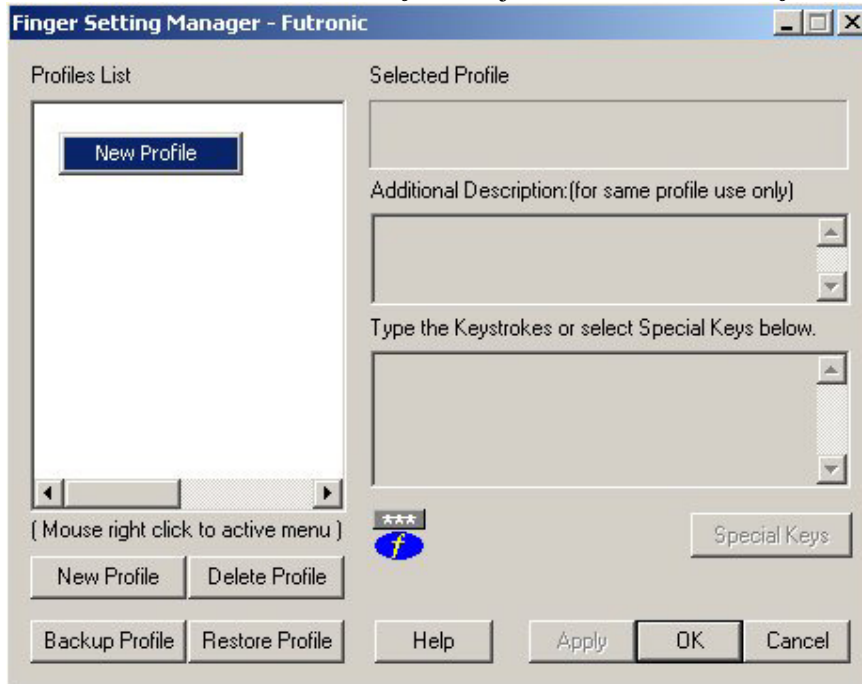
If this option is enable in Finger Manger and the following message is shown when scanning finger,



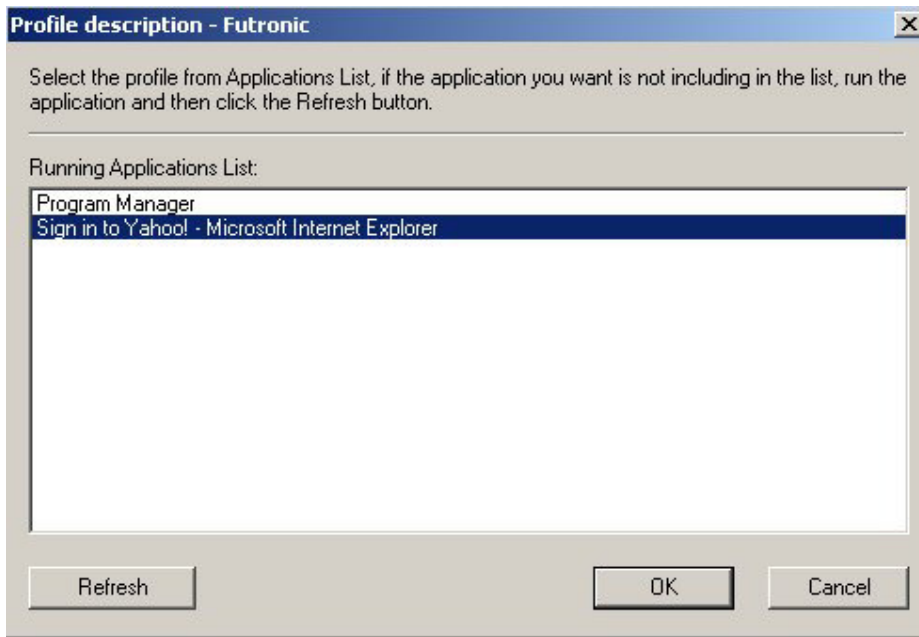
that means the finger put on the scanner is probably a fake finger. Or the finger does not put on the scanner properly. For the scanner to detect if a finger is “real” or “fake” properly, the finger must be put horizontally on the prism of scanner and the finger must be pressing on the scanner plastic shell right below the prism firmly

4.2.1 New Profiles

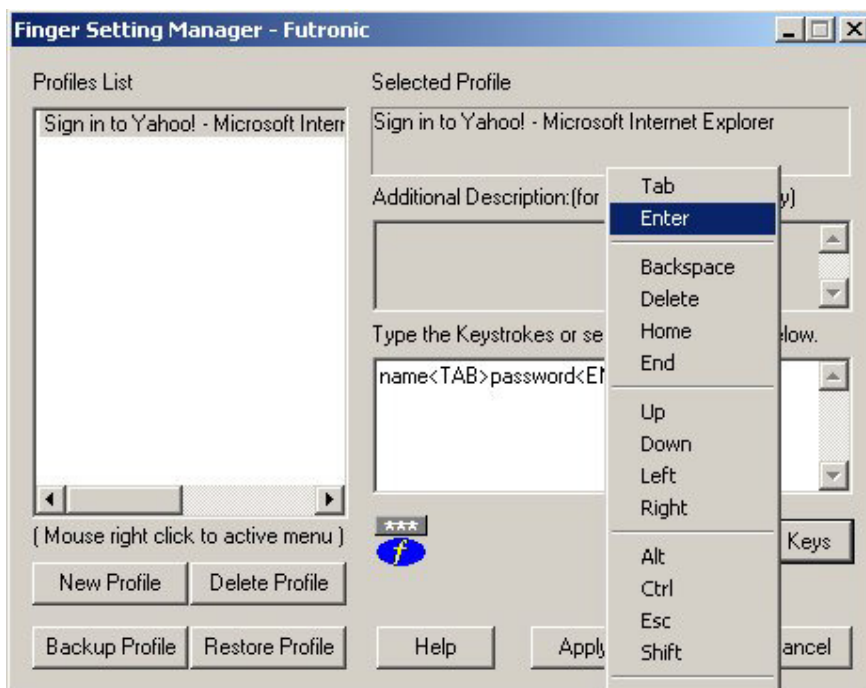
To add a new profile, Move your mouse cursor to the bank area at left, right click the mouse button & select “***New Profile***” or just click the “***New Profile***” button.



It will popup a window which list all the running applications, please select one and then click “OK”.



Enter the keystrokes for current profile.



Use the following steps to create the keystrokes for the new profile.

1. Type the keystrokes you want in the right side text area.
2. Using the Special Keys: Click "**Special Keys**" button to type special keys such as Tab, Enter, Alt, Ctrl, Shift, F1-F12, etc.

3. Click "**Apply**" button to save the keys sequence.

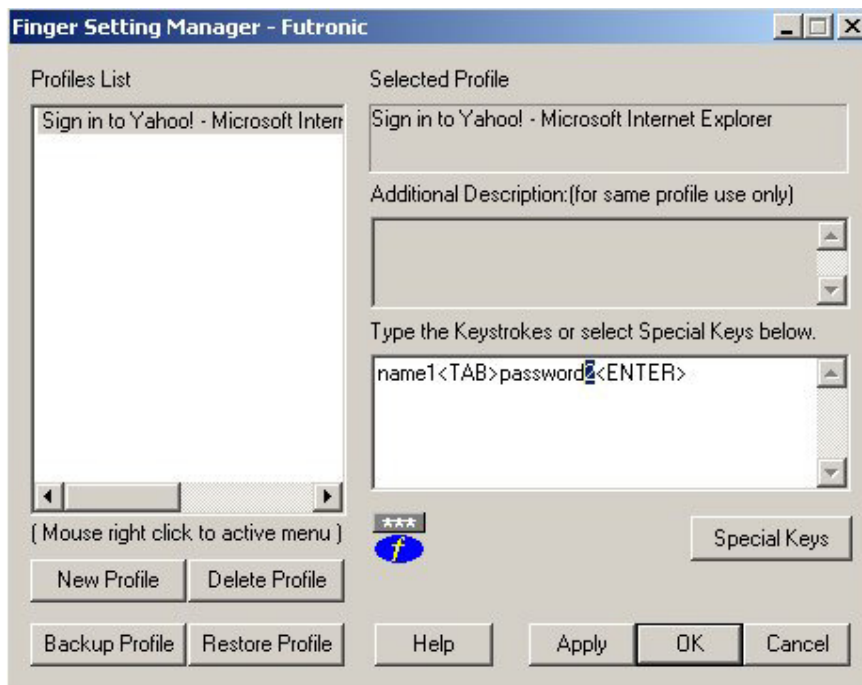
The below example show you how to login your computer software or website directly

Example: **name<TAB>password<ENTER>**

4.2.2 Edit Profile

To edit a profile, do the following steps:

1. Highlight the profiles name at the left side Profiles List.
2. Change the keystrokes at the right side text area.
3. Click "**Apply**" button to save the keystrokes.

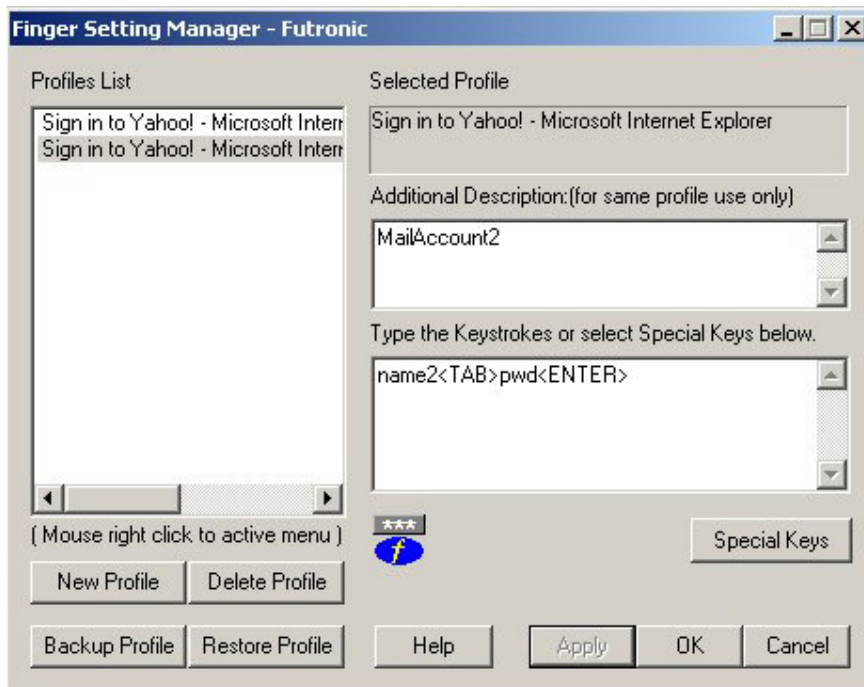


Example: **name1<TAB>password2<ENTER>**

4.2.3 Additional Description for Same Profile

If there are more than 1 profile has the same profile name, the "**Additional Description**" field will be activated and let you to input some description to identify profiles with different content when you do the auto-filling.

For example: if you have 2 email accounts in Yahoo! Mail, then you can input a description for each mail account:

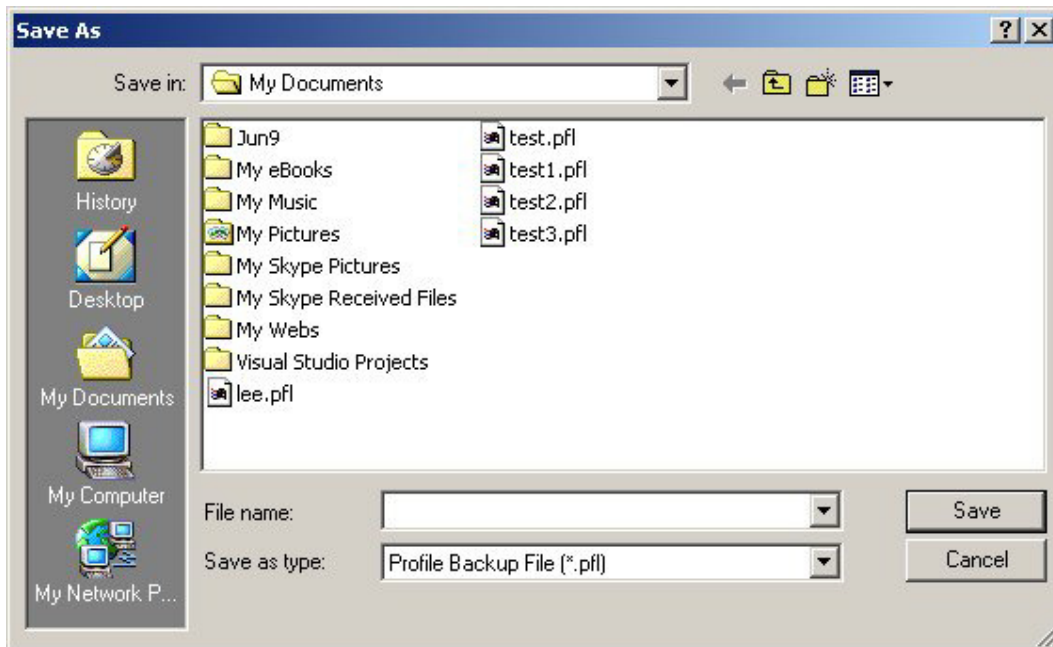


When you activate the One Touch Password Filler to fill password to an application, the description will popup for you to select the right one:

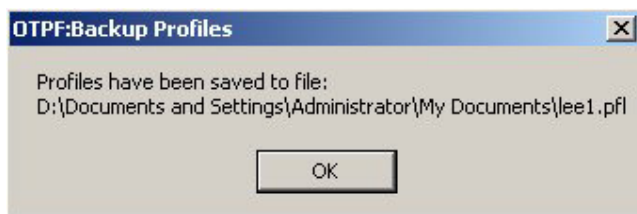


4.2.4 Backup Profile

To backup the profile, just press the button “Backup Profile”, a dialog will popup for you to input the file name to save the profile.



Input the file name and press “Save”, the profile will be saved to the file.

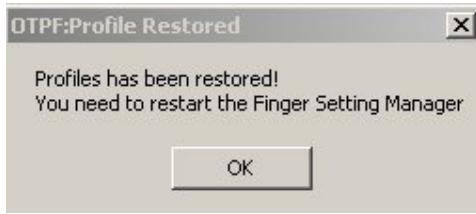


4.2.5 Restore Profile

To restore the profile that you have backup, press button “Restore Profile”, a dialog will popup for you to select the file you have saved, press the “Open” button, another dialog will popup,



Press “Yes” will overwrite the current profiles and restore the profiles from the file.



Press "OK", exit the Finger Setting Manager, when you open the Finger Setting Manager again, the profiles have been restored with the backup file.

4.2.6 Start using OneTouch Password Filler

After completing the profiles editing, click "OK" button to exit the "Finger Setting Manager". The Password Filler is auto start.

To use One Touch Password Filler, follow the steps:

1. Run the application or web page(that you want to auto-fill password) to get the logon window..
2. Place the mouse cursor to the first field which the keystrokes to be filled.
3. Put your finger on the fingerprint scanner (the finger(s) you added in Finger Manager of Finlogon PE).
4. The pre-stored keystrokes will autofill and the log you on automatically.

For example:



The logon processing is just a finger press.

Detect fake finger

If this option is enable in Finger Manger and when scanning finger, a yellow cross is shown over the Futronic logo in the Windows task bar as following,



that means the finger put on the scanner is probably a fake finger. Or the finger does not put on the scanner properly. For the scanner to detect if a finger is “real” or “fake” properly, the finger must be put horizontally on the prism of scanner and the finger must be pressing on the scanner plastic shell right below the prism firmly.

(If you have any queries, please contact our technical support at inquiry@futronic-tech.com)

Enjoy this ultimate convenience in password management by One Touch Password Filler!

<http://www.futronic-tech.com>